

UPRIM

Portable foam unit for hose reel

UPRIM, more robust and more practical

TYPICAL USES :

- Fires in built-up areas.
- Car fires.
- Motorway accidents.
- Smothering of gas escapes.
- Safety measures before welding operations.
- Installation on hose reels to increase their effectiveness.
- Protection of machine tools.



- The extinguishing capacity of more than 40 fire extinguishers...
- Perfect stability
- Tank made of polyethylene.
- Delivery hose withstands low temperatures.
- Wide carrying handle, easy to grip even with gloves on.
- Low and medium expansion corrosion resistant nozzles.



UPRIM BF
LOW EXPANSION

CHARACTERISTICS

| Model | Dimensions H x L x D (in) | Weight empty (lbs) | weight full (lbs) | Operating pressure (PSI) | Flowrate (GPM) | Range (ft) | Expansion ratio |
|----------|---------------------------|--------------------|-------------------|--------------------------|----------------|--------------|-----------------|
| UPRIM LX | 24.8 x 10.5 x 7.3 | 7.15 | 29.9 | 40 – 140 | 16 | 13.2 to 29.5 | 8 – 10 |
| UPRIM MX | 24.8 x 14.4 x 7.3 | 7.83 | 30.6 | 40 – 140 | 16 | 9.8 to 16.7 | 50 – 70 |

| Model | Capacity (Gallon) | Concentration mix-ratio | Pre-mix solution (Gallon) | Running time | Foam volume medium expansion (50) |
|-------|-------------------|-------------------------|---------------------------|-----------------|-----------------------------------|
| UPRIM | 2.64 gal | 6 % | 630 gal | 3.2 – 4.1 min | 296 ft ³ |
| | | 3 % | 1260 gal | 6.4 – 8.2 min | 590 ft ³ |
| | | 1 % | 3770 gal | 19.2 – 24.6 min | 1780 ft ³ |

| Référence | 1" 1/2 thread NH Female |
|-----------|-------------------------|
| UPRIM BF | I30.00.065 |
| UPRIM MF | I30.00.064 |

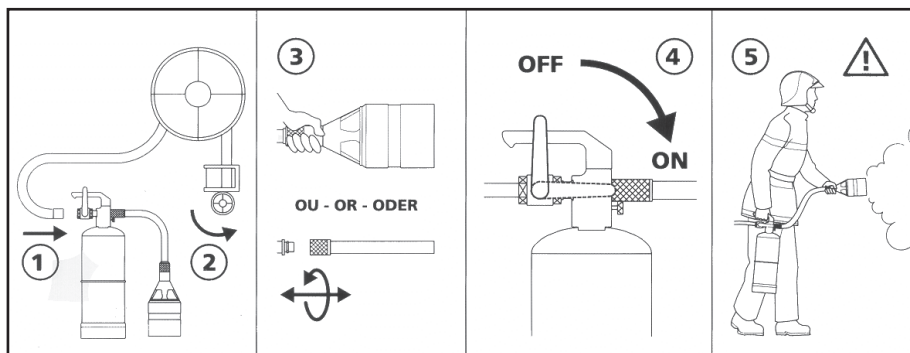
| | Low expansion nozzle | Medium expansion nozzle |
|-----------|----------------------|-------------------------|
| Reference | I30.80.031 | I30.80.032 |

- 2,64 gal tank.
- Maximum resistance to internal corrosion by foam compounds and to weather conditions.
- Composite proportioning nozzle calibrated to 1, 3 or 6 %.
- Stainless steel plunger pipe screwed into nozzle.
- High density polyethylene medium expansion nozzles.
- Nozzles can be interchanged in seconds using the rapid connector.
- Delivery hose 0.6 ft made of reinforced NBR.
- Withstands extremes of temperature, from -22 to + 190°F
- Open / close tap allows perfect control of the appliance.
- Wide, ergonomically designed carrying handle gives a sure grip even when wearing thick safety gloves.
- Easy, fast maintenance.
- Large opening for foam filling.



U.P.R.I.M.

Use :



Point the branchpipe to the fire, according to instructions and procedures specific to the company, and the chosen foam compound (direct, side, wall, front attack.....)

After each use, the proportioning head should be removed from the cylinder and the system operated for 2 minutes with the pick-up tube immersed in a bucket of water in order to flush the unit.



ZF05.056.US.1

As it is our policy to constantly seek to improve our products, we reserve the right to change the specification of our equipment without notice.

