



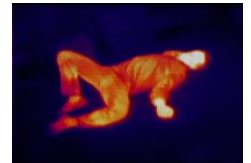
NEW !

**TECH
SEARCH**

DETACHABLE TIC HEAD

TIC head is **Thermal Imaging Camera** head for seeing the hottest points in an area. It **accelerates searches of victims** by locating heat of their body.

- ▶ Applications: Reconnaissances, Dark confined spaces, Dusty environments, Smoky areas, etc...
- ▶ **Plug and play** : Image is displayed as soon as head is connected
- ▶ Temperature range: **0 to 120°C** (32°F to 248°F)
- ▶ **3 modes**: Black hot, White hot, Search (multicolours)
- ▶ **160x120 resolution sensor** in a **robust head** with germanium optic
- ▶ 170° mechanical orientation (85° left 85° right) and 226° field of view
- ▶ **Secured connectors**:
 - Robust & IP67
 - Push & pull locking system
 - Locking ring to screw adds insurance for not losing head during use
- ▶ Can be connected to 90m (295ft) cable reel and 25m (82ft) or 90m (295ft) extension cables
- ▶ **Day light camera head** still available. Has been also made detachable for interchanging it with the TIC head



Characteristics



DETACHABLE TIC HEAD	
Dimensions & Diameter	335mm (13.2in) & 47mm (1.85in)
Weight with probe	2.5 kg (5.5 lbs)
Weight without probe	810 g (1.8 lbs)
Control box screen	7" - 800 x 480 px WVGA
Displayed picture	No zoom: 160 x 120 pixels Digital zoom x2: 320 x 240 pixels
Frequency	8.8 Hz
Colorizations (Modes)	Black and White (Black hot) White and Black (White hot) Multicolours (Search)
TIC HEAD BODY	
Material	Black anodized aluminium + ultra-resistant flex rubber
Drop test	1m (3.3ft) on concrete
Tightness	IP67 / 30 minutes at 1m (3.3ft) deep in water with head connected to probe
TIC SENSOR	
Type	VOx microbolometer
Temperature range	0°C to 120°C // +32°F to +248°F
Resolution	160 x 120 px
Spectral range	Longwave infrared, 8 µm to 14 µm
T°C sensitivity	<50 mK (0.050°C)
TIC OPTIC	
Material	Germanium
Vision	FOV – horizontal 56° / FOV – diagonal 71°
VARIOUS DATA	
Running time	2.5h
Charging time	3.5h
Charging voltage	110 / 220V
Operating T°C	-10°C to +35°C // +14°F to +95°F
Storage T°C	-40°C to +70°C // -40°F to +70°F
Warranty	1 year
PROBE	
Material	Carbon fibre with detachable pistol grip
Length	3.7 m (12.1ft) extended / 1.2 m (3.9ft) retracted
Weight with head	2.5 kg (5.5 lbs)
Weight without head	1.7 kg (3.75 lbs)
Connector	Locking ring to be screwed / IP67 (connected with head)
TIC HEAD FUNCTIONS USED WITH CONTROL BOX	
TIC modes	Black hot – Hot points in black White hot – Hot points in white Search (multicolours) – Hottest points in red
Head orientation	Mechanical orientation 85° right and 85° left (170° total). 226° field of view (orientation + camera)
Zoom	Digital x2
Picture rotation	Possible rotation of picture at screen from 0° to 180°
Files recording	Photos and Videos with sound on SD card
Reading recorded files	Reading of recorded Photos and Videos at control box screen. Can be downloaded on computer
Communication	Sound volume setting up for speaker (on TIC head) and headset allowing 2 ways communication with the victim
Luminosity	Screen luminosity setting up
Right/Left hand	Use of control box by left or right handed

ZF.08.266.EN.3