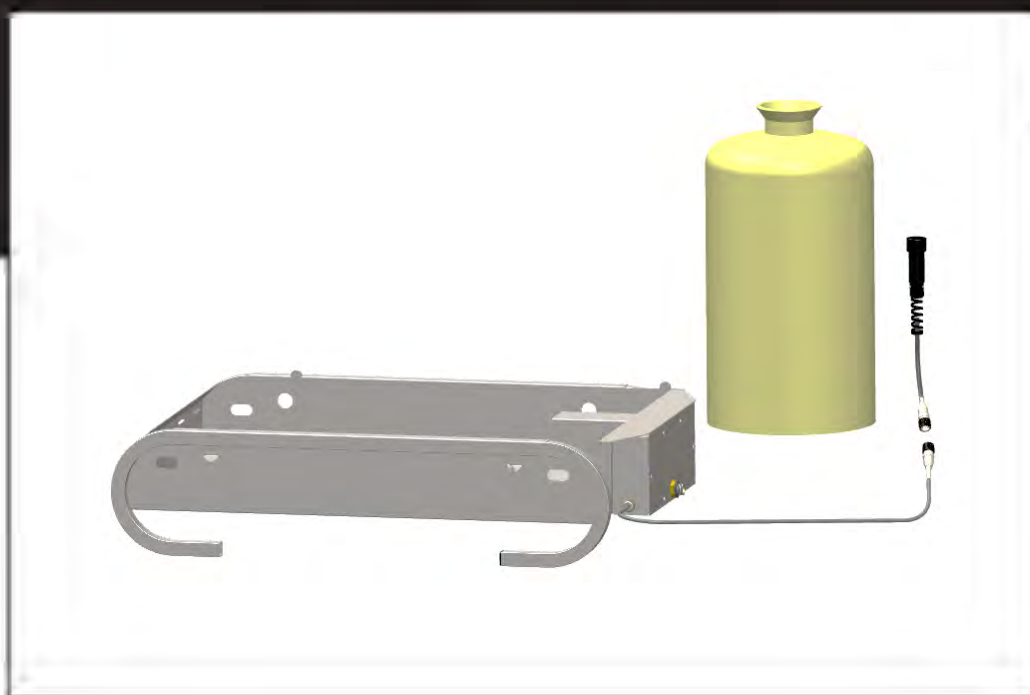


User manual



AEROS 2



EN

Read this manual carefully, before the first use

Product reference :

Reference	Product
V90.00.036	GFE AEROS 2 Sans Lyre
V90.00.037	GFE AEROS 2 SUEDE MONTE AV LYRE + STAUBLI + RAC INTERN

Contents



1	INTRODUCTION	4
2	SAFETY INSTRUCTIONS	5
3	GENERAL SPECIFICATIONS.....	6
4	OPTIONS	7
5	COMMISSIONING INSTRUCTIONS	9
	5.1 Positioning of the tray to the ground	9
	5.2 Gas supply hose connection	10
	5.3 Remote control connection	10
	5.4 Filling the tray	10
6	MAINTENANCE OPERATIONS	12
7	MALFUNCTIONS.....	13
8	GARANTIE.....	14

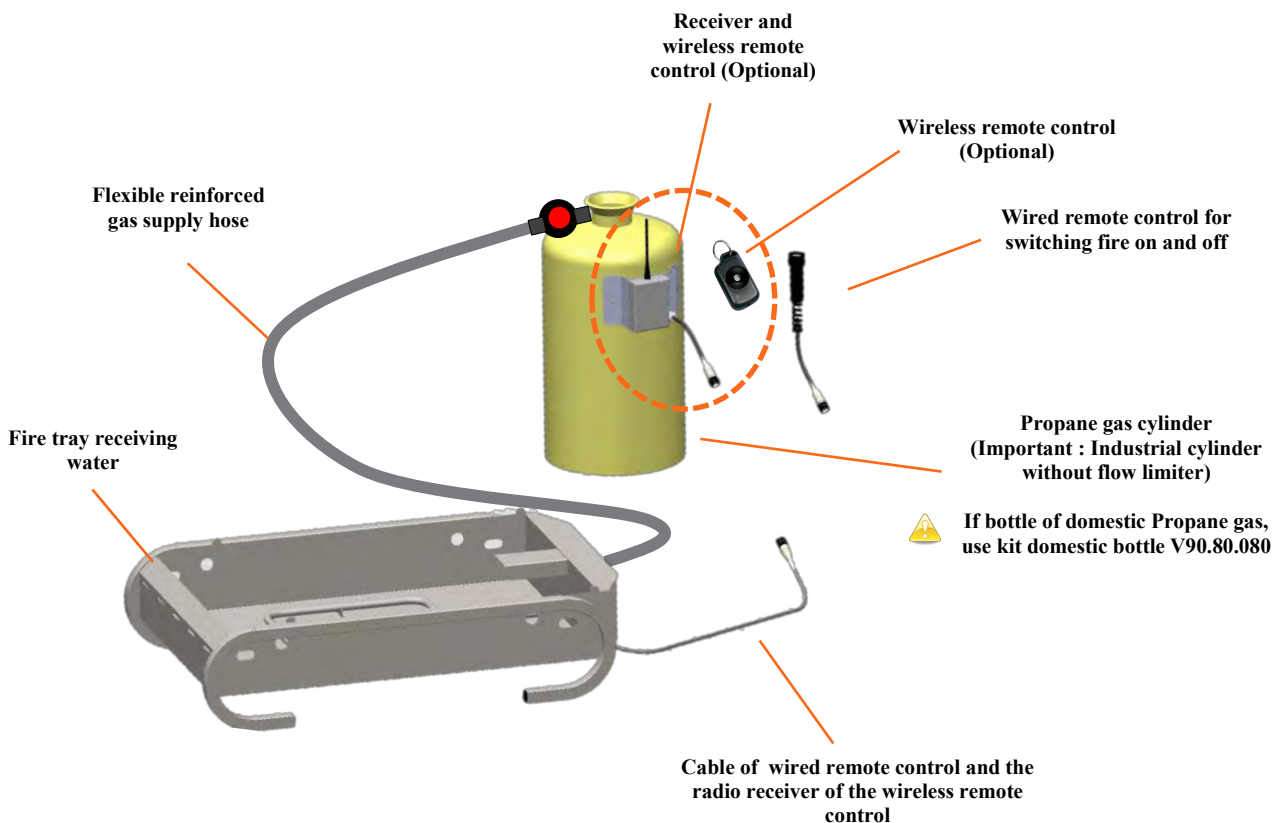
1 INTRODUCTION

The **AEROS2** is a fire trainer with water tray. It allows training in the use of different extinguishing materials (all fire extinguishers, nozzles, portable foam units, etc ...) safely and with respect for the environment.

Thanks to its wired remote control or the wireless remote control (Optional), The **AEROS2** allows the trainer to manage the fire (switching on and off) to accompany trainees safely during training interventions.



The trainings conducted with **AEROS2** can be supplemented with the use of training modules and enable personalized and realistic training : Oil explosion, aerosol explosion, fryer fire, bin fire, screen fire, electric motor fire, or electrical cabinet fire.

**This manual has been designed to allow safe use of AEROS2.
Instructions for use and maintenance must be followed to prevent incidents.**



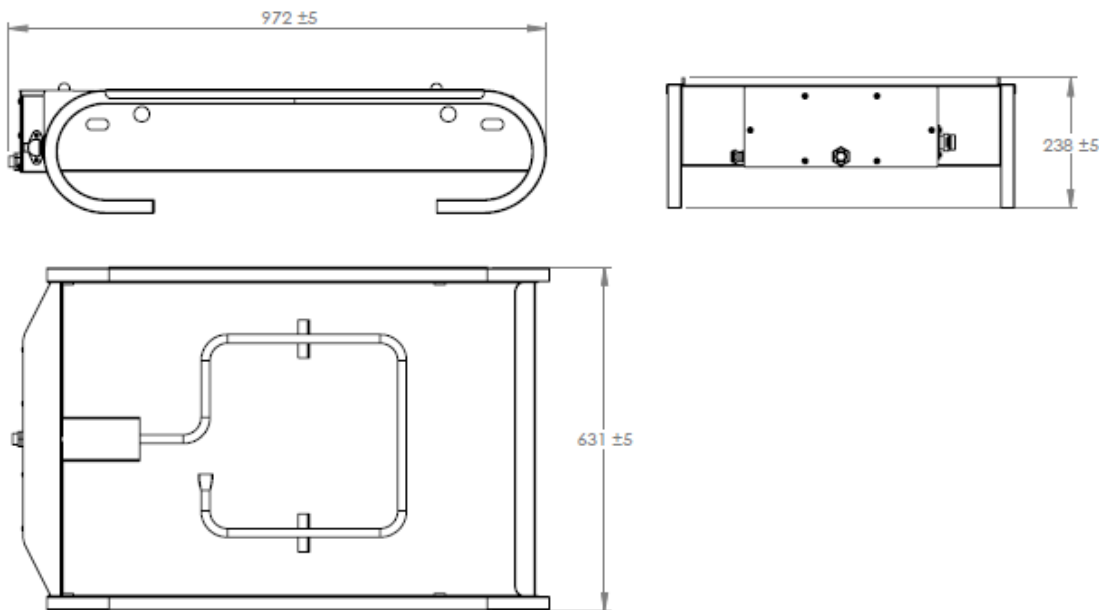
2 SAFETY INSTRUCTIONS



- Read this entire manual along with all the instructions before using the equipment.
- Check the condition of the gooseneck regularly.
- The unit only works with Propane gas. It is forbidden to feed your flame generator with propane in liquid form, especially with carburetion bottles.
- This equipment use only and should not be used in explosive atmospheres.
- It is strongly recommended that you use the flame generator outside. In the event that you use it in a confined space, the space must be open and well ventilated. In particular, make sure that the area has enough ventilation. In fact, the main risk is linked to unburned gas that, being heavier than air, can linger around the floor and, in certain conditions, create an explosion risk.
You also need to be aware of possible small soot formation.
- The distance container / cylinders given by the length of pipe supply : 6m.
- Never use this equipment over 3 bar.
- Hot surfaces : always wear gloves to avoid burns.  
- The remote control or wireless remote control must always stay in the instructor's hands.
- Do not keep pressing the push-button on the remote control if no flame appears, so as to avoid the risk of spreading non-ignited gas, which could catch fire outside the limits of the fire container.
- Any dismantling, or any attempt at dismantling the apparatus, except for consumables such as the battery or the fuse, will render the manufacturer's guarantee null and void.
- This equipment apparatus works only with gas in the gaseous state. It should always be supplied from cylinders standing upright; never put the cylinder on its side.
- Remember that it is forbidden to store cylinders of Propane gas indoors. They must be kept outdoors.
- Training apparatus using explosive fuel are for use by trained staff only. **LEADER** accepts no responsibility in the event of accidents or damage involving people or property.
- Be careful that no sand or gravel enters through the joints of the pipe or the apparatus. This could damage the electro-valve.
- The battery can be discharged down to a minimum of 10v. Beyond this it will not be possible to recharge it properly.
- Always replace a defective part by an original part supplied by **LEADER**.
- Keep the device away from children.

3 GENERAL SPECIFICATIONS

- **Dimensions :** 972 x 631 x 238 +/-5mm. (3.19 x 2.07 x 0.78 +/-0.016ft).
- **Weight :** 20.8 +/-0.5kg (44.10 +/-1.10lbs) .
- **Volume of water :** 35 litres (9.25 gal).
- **Fire surface :** 0.50 m² (5.4ft²).
- **Gas supply controlled by electro-valve :** Immediate Flow rate = 20 kg/h (44lbs/h).
- **Electric power supply :** Rechargeable sealed lead/acid battery 12V.
- **Firing system using :** Spark plug.
- **Operating temperature from :** -5°C to +40°C (23 to 104F°).



- **CHARGER :**

Supply: 110 / 220 V – 50 Hz Frequency.

Charge time: 24 hours (when battery is fully discharged). Rely on the light on the charger.

For more information see the manufacturer attached manual of the charger.

- **GAS SUPPLY :**

Possible with one or two industrial Propane gas cylinders of 13 kg (29.7ft) type without flow limiter or fourth cylinders 13 kg (29.7ft) Propane domestic type with two kits flow limiter **réf: V90.80.053**.

Adjustable flow regulator gas.

Gas supply hose of 6 meters (19.7ft) to be screwed.

It is advisable to use industrial or domestic Propane gas cylinders (13 kg or 35 kg (28.7 or 77.2lbs)) from Antargaz company. (France). For supply points: www.Antargaz.com.

Outside France, consult the country's gas supplier.

▪ REMOTE CONTROL :

It Connects directly to the tray, allowing the ignition and extinguishing of the fire.
Water resistant.

Designed to avoid accidental triggering. The control button is indeed protected by a cover which overlooks the button height. To trigger the burning gas, the button must be deliberately push. In the event of a fall or shock it protects it.

Electrical cable length: 9 meters (29.5ft).

Fire resistance : Certified to IEC 331.

Temperature range : -60 ° to 180 ° C (-76 to 356F°).

▪ WIRELESS REMOTE CONTROL (OPTIONAL)

Range : 30 m (98.5ft).

Battery : GP27A 12V 18mAh.

It Works hand in hand with a radio receiver attached under the table desk.

This module consists of a housing with its antenna and is resistant to water.

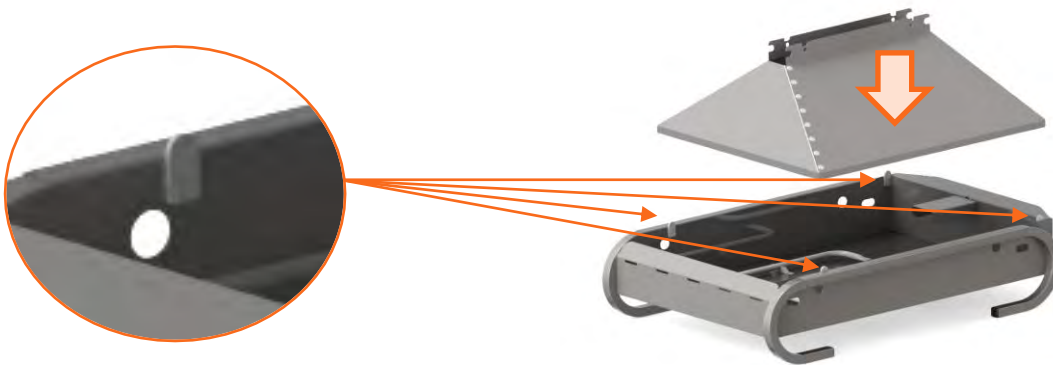
The electric cable which connects the receiver to the tray is the same length as the reinforced gas supply hose.

Temperature range : -60 ° C to 180 ° C (-76 to 356F°).



4 OPTIONS

To position the Accessory Adapter:





Single adaptor
With anchors
Réf V90.80.074



Flat screen module
New model
Réf V90.80.071



Electrical cabinet module
A door with a removable key that attaches to a flat screen
Réf V90.80.075



Aerosol can explosion module
To be used with LEADER aerosols only
Réf V90.80.072



LEADER aerosol
150ml
Réf V90.80.079



Dustbin module
Attaches to a flat screen
Réf V90.80.062



Fryer fire module
To be installed on the set screen and dustbin
Réf V90.80.070



Electric motor module
Réf V90.80.063



Oil explosion module
Réf V90.80.073



Gas supply pipe kit for all flame generators
In order to use 2 PROPANE gas cylinders
Réf V90.80.053



Wireless remote control kit
Réf V90.80.083

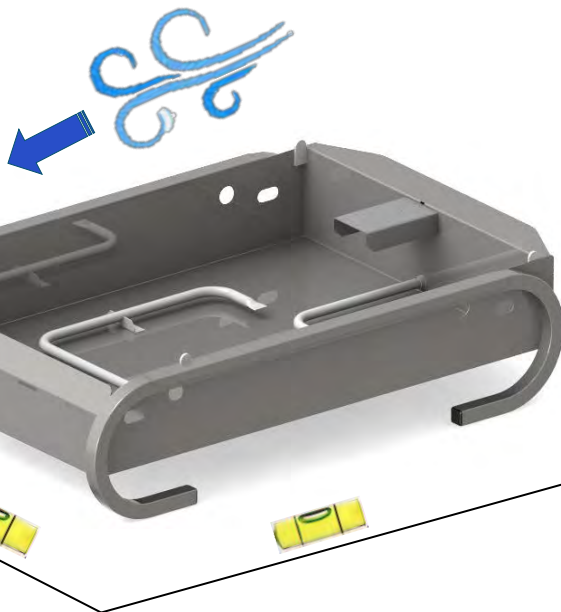
5 COMMISSIONING INSTRUCTIONS



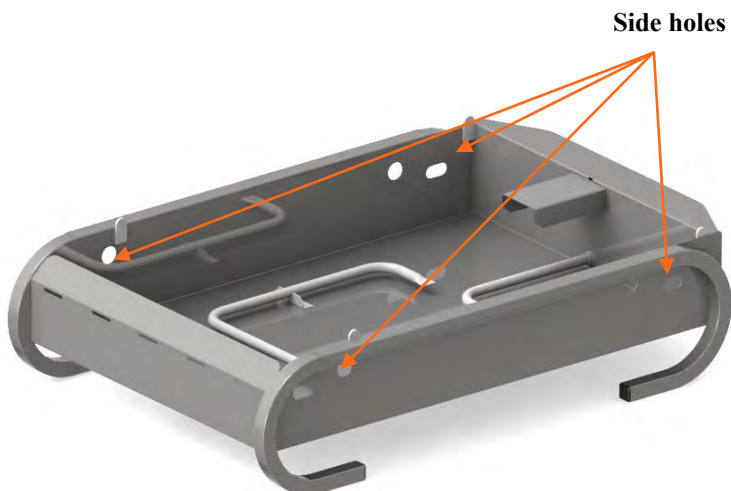
Use indoors can cause an accumulation of gas resulting in an explosion!

Before use: Recharge the battery for at least 12 hours.

5.1 Positioning of the tray to the ground



- Place the fire generator tank on a flat surface to make sure the water level is even in all areas.
- Place it so that the remote control cable and the gas supply pipe are opposite the direction of the wind.



- Fill the tank until it overflows from the side holes.

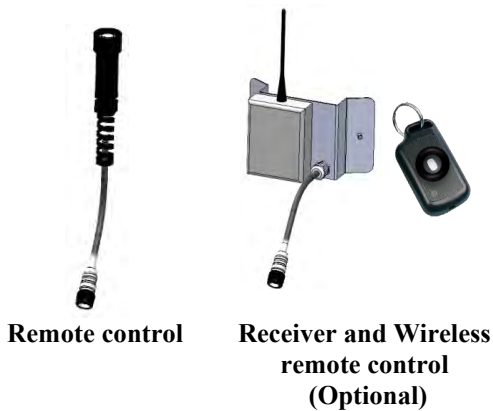
5.2 Gas supply hose connection



- Once the tray is full of water, place the gas bottle far from the flame generator tank; use the full length of the pipe and avoid bends.
- Manually screw the pressure regulation valve onto the bottle.
- Connect the gas supply lyre to the flame generator tank either by screwing on the lyre fitting manually, or by connecting the quick coupler (optional)
- Once the appliance has a gas supply, set the pressure regulation valve to a position greater than **3** for firing.



5.3 Remote control connection



Remote control

Receiver and Wireless remote control (Optional)

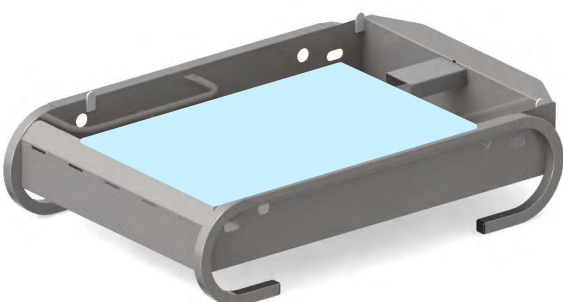
- After removing the protective cap of the connector, connect the remote control cable of the wired remote control or the wireless remote control (cable of the radio receiver) (Optional).
- Then you can use it by pressing the button on the remote control or the wireless remote control (Optional) to fire the flame generator tank. Release the button to put out the flames.
- To increase or lower flame height, increase or decrease the pressure regulation valve setting.



5.4 Filling the tray

Fill the tray with water to overflow through the side holes.

In use, the water evaporates due to the heat generated by the fire. These openings are a good marker of the level of water. Make up the water when necessary.



- Always keep a watch on the flame generator tank and the persons around it when operating the remote control or the wireless remote control.
- The remote control must be permanently held by the operator. The operator must stand close to the gas bottle, ready to close its valve or to set the pressure regulation valve to **0** if there is a problem. If the operator needs to move away from the gas bottle, they must assign a person to be ready to cut the gas supply in the event of a problem.

The remote control is secure: only a deliberate action can operate the control button. From its design, unplanned triggering of the flame generator following a fall or an impact is improbable.

Stopping :

The appliance must be drained before disconnecting the pressure regulation valve from the bottle. Place the pressure regulation valve on **0**, shut off the bottle and press the remote control to evacuate the remaining gas.

Then you can disconnect the lyre from the bottle and the tank, then tip over the tank to empty its water.



- Do not try to start the Aeros with the pressure regulator in position **0 or 3**.
- Do not smoke during these operations
- We recommend the use of work site type 13 kg or 35 kg propane gas bottles from **Antargaz**.
To find out where to purchase them: <http://www.Antargaz.com> .
- The Aeros appliance only operates using propane gas in its gaseous state. Always supply it using vertical bottles; do not lay the bottles on their sides as this would cause the Aeros to operate with the gas in liquid state and would permanently damage the entire gas circuit.
- Any type of extinguishing agent can be used with the **AEROS2**.
- Be careful when using foam: it traps the gas which risks igniting further away when it is no longer in the tank.
- It is possible that trainees manage to blow out the flames, especially when using a Co² extinguisher. Release the remote control button. The trainee will have the impression that they put the fire out.
- Do not keep the remote control button pressed down if no flames appear, to prevent the spread of non ignited gas and its unplanned ignition outside the flame generator tank.
- After an intervention, wait for a few seconds and reset the pressure regulator to position **1 or 2** before reigniting the fire, so that the tank is no longer saturated with gas.



**Do not use AEROS without water !
Remember to regularly top up the water level.**

6 MAINTENANCE OPERATIONS

○ Propane bottle

- Close the gas bottle and place the pressure regulation valve in position 0, purge the gas circuit by pressing the button on the remote control.



This operation ignites the fire in the tank, which will then quickly go out.

- Disconnect the gas bottle supply pipe.
- Disconnect the flame generator gas line.

○ Tank water

- To empty the water from the tank, tip it towards the side opposite the ignition system.



○ Cleaning



BEWARE OF THE HOT PARTS.



- The upper part of the tank is very hot after use.
- Before handling the tank, hose it down with water to cool it; wear gloves.
- Wash the tank abundantly with water to remove any powder or other extinguishing agent residue.
- In order to remove soot, clean the tank using Pyroclean; apply using a damp sponge, then rinse abundantly and wipe with a soft cloth.

○ Recharge de la batterie



Do not use the AEROS while the battery is charging!



- Disconnect the cap
- Connect the charger plug to the tank.
- Then, connect the charger to the mains.

NOTE:

The charge time for an flat battery, or a battery being charged for the first time is about 24 hours. Please read the manufacturer's instructions. We recommend recharging the battery after each use, or once per month if it has not been used.

7 MALFUNCTIONS

Symptoms	Possible cause	Solutions
The flames are not high enough.	Is the gas bottle sufficiently full?	Replace the bottle.
	Is the flow regulation knob on the pressure regulator sufficiently tightened?	Tighten the flow regulation knob.
	The gas bottle is frosted (too intense use).	Change the gas bottle Or wait for it to defrost.
	Are the weather conditions favourable?	A very low outside temperature has a significant influence on the size of the flames. They will be bigger in summer than in winter.
Nothing happens when you press the button on the remote control.	Has the battery been recharged?	Connect the charger to the AEROS tank and power it on.
	Are the batteries in the wireless remote control (if used) full?	Change the cell batteries.
The gas is not flowing (the water is not "bubbling"). However the spark is produced (you can hear the continuous "tick-tick" of the firing system).	Is the gas bottle open?	Open the gas bottle.
	Check the position of the pressure regulator knob.	If it is on 0, turn it to position 1 or 2.
	Is the "tack" from the solenoid valve heard as soon as you press the remote control button?	If not, the solenoid may be defective. Repairs must be carried out in the factory.
The gas is flowing (the water "bubbles") but does not ignite.	The firing system is saturated with gas.	Wait a few moments for it to be sufficiently ventilated.
	There may be a drop of water on the electrodes.	Tap the tank to make the drop of water fall off.
	Has extinguisher powder been used during the drills?	The electrodes are dirty. Was them abundantly in water and dry them using compressed air
	Can you hear the "tack-tack" of the firing system?	If not, the white high voltage block on the firing system may be burnt out. It must be replaced in the factory.

8 GARANTIE



LEADER equipment has a contractual limited guarantee from the date of purchase, defined below by product, parts and labor (excluding transport costs and travel).

This warranty is specifically limited to replacing or repairing the equipment (or its parts) which proves defective after examination for reasons attributable to **LEADER**.

To initiate this warranty, with the agreement of **LEADER** the claimant must return the equipment in the shortest possible time after discovery of the defect to the following address:

LEADER,
Maintenance Department,
ZI des Hautes Vallées Chemin No. 34, CS 20014,
76930 Octeville Sur Mer,
France,

OUT OF WARRANTY EQUIPMENT

A complete analysis will be carried on your faulty equipment, after which a detailed quote will be offered. For faults and non-warranty repairs, a diagnosis fee will be applied independently of the acceptance of the repair estimate.

Our after sales service is committed to a processing time, upon acceptance of the quote.

LEADER®

Fighting for performance

SIEGE SOCIAL

LEADER S.A.S

ZI des Hautes-Vallées-2 Chemin n°34-CS20014-76930

Octeville sur Mer-France

FILIALE

www.leader-group.company

LEADER
Fighting for performance

LEADER GmbH

Zur Fabrik 10-66271 Kleinbittersdorf

Allemagne

Tel : +49 (0) 6805/60067 -0

Fax : +49 (0) 6805/60067 -10

info@leader-gmbh.de

TEMPEST

Tempest Technology Corp.

4708 N. Blythe Ave. Fresno. CA 93722

USA

Tel : +1 559.277.7577

Fax : +1 559.277.7579

response@tempest.us.com

AGENCE

ESPAGNE / PORTUGAL / AMERIQUE LATINE

spain.portugal.latinamerica@leader-group.eu

CHINE / HONG KONG / MACAO

china@leader-group.eu

LEADER GROUP

Our policy is to constantly seek to improve our products. We therefore reserve the right to change their technical specifications at any time and without prior manual. No contractual images.



PLEASE RECYCLE

Package leaflet code:
AEROS2.00.ZN4.9.EN.0