



Flame Generators

REALISTIC FLAMES FOR EFFECTIVE TRAINING

From Tempest Technology



GF42

Waterless Pan
Surface area: 4.5 ft²
Flame height: 4 ft.

Item # **810-100**
Dimensions: 32 x 30 x 30
Weight: 78 lbs

AEROS2

Water Pan Holds 9 gallons
Surface area: 5.5 ft²
Flame height: 5 ft.

Item # **V90-00-036K**
Dimensions: 48 x 40 x 16
Weight: 82 lbs

PYROS3

Water Pan Holds 16 gallons
Surface area: 9 ft²
Flame height: 10 ft

Item # **V90-00-043K**
Dimensions: 48 x 40 x 22
Weight: 170 lbs

- ☑ **3 models for your convenience**
- ☑ **Realistic Fire Extinguisher Training with no residue**
- ☑ **Fueled by propane** and using propane accessories
- ☑ **Produces real flames for realistic training**
- ☑ **Safely manage flames by remote control**
- ☑ **Available Safety Training modules** for customized simulation scenarios (computer screen, trash, fryers, electric motors, etc)
- ☑ **Train with any kind of extinguishing equipment:** all types of fire extinguishers, nozzles, foam units, etc.
- ☑ **Drains included with water pan models** for easy cleanup

Familiarize your students with every fire extinguishing situation. We offer modules for flame generators for realistic simulations: from computer screen fires, trash fires, deep fryer fires, electrical cabinet fires, aerosol explosions, electric motor fires and oil explosion.

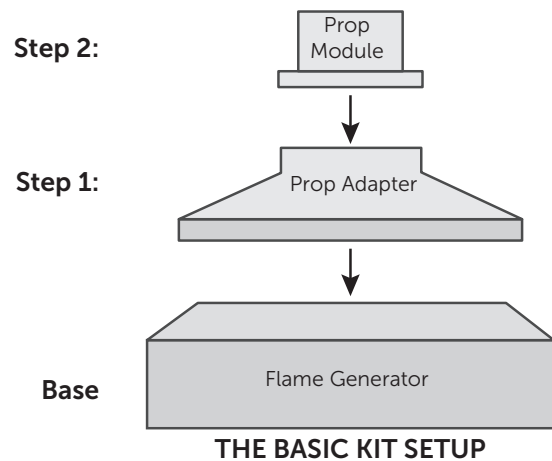


Available Options

Item #	Description
810-100	GF42 Environmentally Friendly Flame Generator Kit with Remote Solenoid
800-023	Remote Controlled Solenoid Module
V90-80-057	Armored Gas Hose With Pressure Regulator for GF42 and Aeros2
V90-80-074	Prop Adapter for Motor, Bin, and Screen for GF42 and Aeros2
V90-00-036K	AEROS2 Environmentally Friendly Flame Generator with Water Pan, Remote Controlled Solenoid Module & Gas Hose
V90-80-057	Armored Gas Hose With Pressure Regulator for GF42 and Aeros2
V90-80-074	Prop Adapter for Motor, Bin, and Screen for GF42 and Aeros2
V90-00-043K	PYROS3 Environmentally Friendly Flame Generator, with Water Pan and Wireless Remote Control
V90-80-077	Prop Adapter for Motor, Bin, and Screen for Pyros3
V90-80-077	Prop Adapter for Motor, Bin, and Screen for Pyros3
V90-80-058	Quick Release Coupling Kit - Stable Coupling Kit
V90-80-062	Prop - Bin Module* - Requires Prop Adapter & Flat Computer Screen Module
V90-80-063	Prop - Electric Motor* - Requires Prop Adapter
V90-80-070	Prop - Chip Pan Fire Module* - Requires Prop Adapter, Flat Computer Screen Module & Bin Module
V90-80-073	Prop - Oil Explosion Module - Requires Prop Adapter
V90-80-071	Prop - Flat Screen Module - Requires Prop Adapter
V90-80-075	Prop - Electrical Cabinet Door + Key* - Requires Prop Adapter & Flat Computer Screen Module
V90-80-072	Prop - Aerosol Can Explosion Module* - Requires Prop Adapter & Leader Aerosol Can
V90-80-079	Spare Aerosol Can For Explosion Module - 12 Cans
2001985	Set of International Gas Connectors (1 Already Included with GF42, Aeros2, and Pyros3)



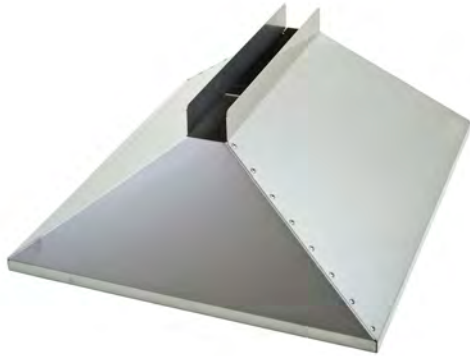
Shown with adapter and flat screen monitor prop





ADAPTERS: GF42 & AEROS2

PYROS 3



Connector Module for GF42 or AEROS2
V90-80-074
Prop Adapter for Motor, Bin, and Screen
Dimensions: 11 x 28 x 24
Weight: 17 lbs



Connector Module for PYROS 3
V90-80-077
Prop Adapter for Motor, Bin, and Screen
Dimensions: 11.5 x 29 x 18
Weight: 20 lbs



V90-80-071
Prop - Flat Screen Module
Dimensions: 15 x 18.5 x 3.5
Weight: 14 lbs



V90-80-075
Prop - Electrical Cabinet Door + Key
Dimensions: 15 x 18.5 x 4.5
Weight: 14 lbs



V90-80-063
Prop - Electric motor
Dimensions: 14 x 13 x 22
Weight: 15 lbs



V90-80-073
Prop - Oil Explosion
Dimensions: 18 x 10.5 x 12
Weight: 6 lbs



V90-80-062
Prop - Trash Bin Module
Dimensions: 14 x 15.5 x 7
Weight: 6 lbs



V90-80-070
Prop - Chip Pan Fire Module
Dimensions: 5.5 x 15.5 x 10.5
Weight: 3 lbs



V90-80-075
Prop - Aerosol explosion
Dimensions: 9 x 10.5 x 8
Weight: 34 lbs



V90-80-079
Prop - Aerosol Cans Case of 12
Dimensions: 24 x 24 x 8
Weight: 6 lbs